

# USER'S MANUAL



Music

FULL HD 1080P Network Media player - Model No: HD02-8R

## Table of Contents

- Shenzhen Dayfly Tech,LTD

- [www.dayflycn.com](http://www.dayflycn.com)

<b>1. Introduction.....</b>	<b>4</b>
1.1 Preface .....	4
1.2 Packing List .....	6
1.3 Cautions .....	6
1.4 Connection .....	6
1.5 Power On / Off .....	11
1.6 Menu Language .....	11
1.7 HDD Format .....	12
<b>2. Remote Control .....</b>	<b>13</b>
<b>3. Setup Menu .....</b>	<b>16</b>
3.1 Changing Audio Settings .....	16
3.2 Changing Video Settings .....	17
3.3 Changing Network Settings .....	18
3.4 Changing System Settings.....	22
3.5 Miscellaneous .....	23
<b>4. Browser Menu .....</b>	<b>24</b>
4.1 Browsing All .....	25
4.2 Browsing Music .....	25
4.3 Browsing Photos .....	26
4.4 Browsing Movies .....	26
4.5 DVD playback .....	27
4.6 A/V Streaming via Network .....	28

4.7 A/V Streaming via UPnP-server .....	30
4.8 Renaming / Deleting Files .....	31
4.9 Managing the Playlist .....	32
<b>5. File Copy Menu .....</b>	<b>33</b>
<b>6. BT and samba ( NAS) .....</b>	<b>44</b>
<b>7. IMS .....</b>	<b>45</b>
<b>8. Upgrading the Firmware .....</b>	<b>45</b>
<b>9. Appendixes.....</b>	<b>46</b>
9.1 Specifications .....	46
9.2 Frequently Asked Questions .....	47
9.3 Warranty .....	49

## **1. Introduction**

## 1.1 Preface

Thank you very much for purchasing this HD media player. We hope you will enjoy using it as a great home entertainment partner. This player has the following functionality.

### A/V Output

- HDMI V1.3 for high-definition video and digital audio
- Composite & component video and stereo audio for analog audio-visual connection
- S/PDIF Coaxial and optical interface for high-fidelity digital audio
- Adjustable video output resolution (NTSC, PAL, 480p, 576p, 720p, 1080i, 1080p)

### Multimedia Playback

- Supports major audio, video and image file formats (1080p HD video decoding)
- Movie format: AVI/MKV/XVID/DIVX/TS/M2TS/MPG/MP4/M4V/MOV/VOB/ISO/IFO/DAT/
- WMV9/ASF/RM/RMVB/FLV/DVD MENU Playback/H.264
- Music format: MP3/OGG/WMA/WAV/AAC/FLAC/Dolby Digital/DTS/DTS downmix
- Photo format: HD JPEG/BMP/GIF/TIF/PNG

## **Network Feature**

- A/V streaming/transmission via Ethernet (10M/100M) & Wi-Fi (802.11b/g/n, optional)
- File sharing via Samba server
- A/V streaming via UPnP Media Server
- BitTorrent download

## **File Copy**

- Supports copying & moving files among Card, USB, HDD, and Network.
- Supports copying files from DVD ROM to Card, USB, HDD, and Network.

## **USB 2.0 Support**

- USB DEVICE port (for computer connection)
- USB HOST port x 2 (for USB storage devices or WiFi dongle)

## **DVD playback**

Supports DVD, Mini BD, AVCHD, VCD, CD

Note: All the information contained in this manual was correct at the time of publication. However, as our engineers are always updating and improving the product, your device's software may have a slightly different appearance or modified functionality than presented in this manual.

## 1.2 Packing List

Note:

The actual contents in the package might be different from the packing list in this manual.

Part	Quantity
Player	1
HDMI cable	1 (optional available)
AV cable	1(optional available)
USB cable	1
Remote Control	1
Remote Control Battery	2
User Manual (printed)	1
802.11b/g/n Wireless LAN USB adapter	1 (optional available)

## 1.3 Cautions

The player design and manufacture has your safety in mind. In order to safely and effectively use this player, please read the following before usage.

### **1.3.1 Usage Cautions**

User should not modify this player. If commercial hard disk is being used, the environmental temperature should be within  $+5^{\circ}\text{C}$  ~  $+35^{\circ}\text{C}$ .

### **1.3.2 Power**

The player's power voltage: AC 100V - 240V

When using this player, please connect the supplied AC adapter or AC adapter cable to the player's power jack. When placing the adapter cable, make sure it can not get damaged or be subject to pressure. To reduce the risk of electric shock, unplug the adapter first before cleaning it. Never connect the adapter to the player in a humid or dusty area. Do not replace the adapter or cable's wire or connector.

### **1.3.3 Radio Interference**

- If not properly shielded, almost all electronic devices will get radio interference. Under some conditions, your player might get interference.
- The design of this player has followed the FCC/CE standard, and has followed the following rules:
  - (1) This player may not cause harmful interference;
  - (2) This player could accept some interference received including interference that may cause undesired operation.

### **1.3.4 Repair**

If the player has a problem, you should take it to an appointed repair center and let the specialists do the repair, never repair the player by yourself, you might damage the player or endanger yourself or your data.

### **1.3.5 Disposing of the Player**

When you dispose of the player, be sure to dispose it appropriately. Some countries may regulate disposal of electrical device, please consult with your local authority.

### **1.3.6 Hard Disk Cautions**

The player uses an internal hard disk for data storage, in normal case, format or repair is not required.

You should carefully read the < Frequently Asked Questions > chapter, and check our website for latest information before formatting the hard disk.

- Physical impact may create bad sector in the hard disk, you can use CHKDSK to fix the problem.
- All data stored in the player may be lost due to physical impact, electrical shock, power lost, HDD format etc. Please backup your data.
- It is suggested to do defragment after a long period of usage.
- Regularly backup the data in the hard disk so that it can be recovered in the event of data corruption or loss. Our

company takes no responsibility for loss of data stored on the hard disk.

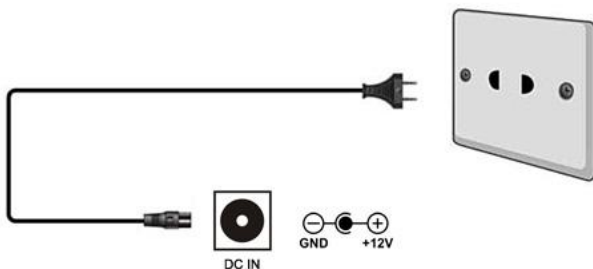
### **1.3.7 Others**

- When using this player, please do not let the player come into contact with water or other liquid, if water is accidentally spilled on the player, please use a dry cloth to absorb the spillage.
- Electronic products are vulnerable, when using please avoid shaking or hitting the player, and do not press the buttons too hard.
- Do not let the player come into contact with water or other liquid.
- Do not disassemble the player, repair the player or change the design of the player, any damage done will not be included in the repair policy.
- Do not press the buttons of the player too hard.
- Avoid hitting the player with hard object, avoid shaking the player, and stay away from magnetic fields.
- During electrostatic discharge and the strong electromagnetic field, the product will malfunction, then unplug the power cable and the product will return to normal performance next time it is powered on.

## **1.4 Connection**

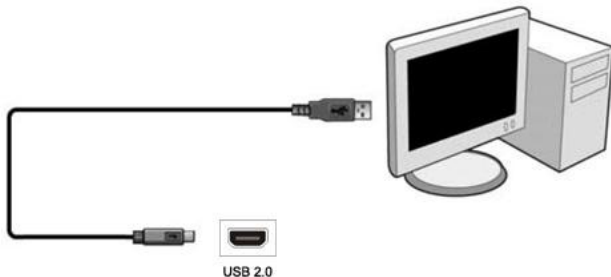
### 1.4.1 Connecting the Power Supply

- (1) Follow the picture and connect the AC adaptor to the player's DC IN jack;
- (2) Follow the picture and plug in the AC adaptor to the power outlet.



### 1.4.2 Connecting to a PC

- (1) Make sure the player is powered on;
- (2) Plug in the mini connector of the USB cable to this player's USB DEVICE port;
- (3) Plug in the rectangular connector of the USB cable to computer.



In this way, you can manage content on the built-in HDD of the player on your local PC.

### 1.4.3 Connecting a USB Device

- (1) Make sure the player is powered on;
- (2) Plug in the USB stick or USB HDD etc. to the USB HOST port of this player.



In this way, you can browse contents on the USB device.

### 1.4.4 Connecting a Memory Card

Memory card can be used by inserting to a card reader

- (1) Follow the picture to insert the memory card to the card slot properly;
- (2) Insert the card by following the arrow pointer in the picture.

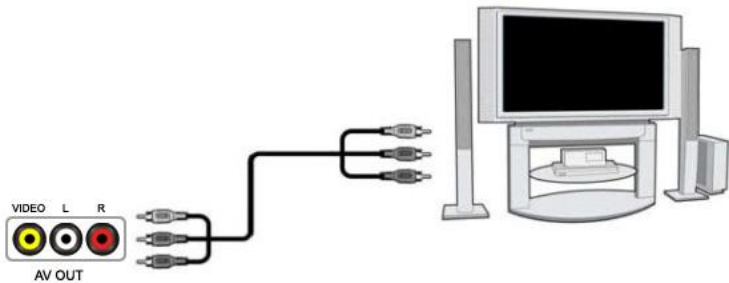


In this way, you can browse contents on the memory card.

### 1.4.5 Connecting to a TV

#### 1.4.5.1 A/V OUT

- (1) Follow the picture and plug in the 3 color connector to the player's A/V OUT jack;
- (2) Follow the picture and plug in the 3 color connector to the TV's A/V IN jack.



In this way, you can enjoy the content in the player on TV or other display devices.

#### **1.4.5.2 Y/Pb/Pr Component OUT**

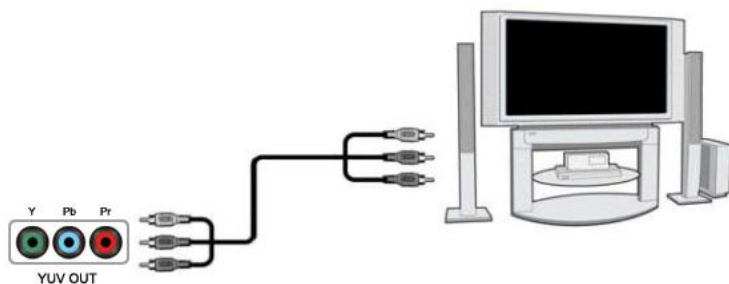
(1) Follow the picture and plug in the 3 color connector to the player's Y/Pb/Pr jack;

(2) Follow the picture and plug in the 3 color connector to the TV's Y/Pb/Pr jack.

Audio Connection while using Y/Pb/Pr Video out:

First method: use the audio output from the A/V OUT jack;

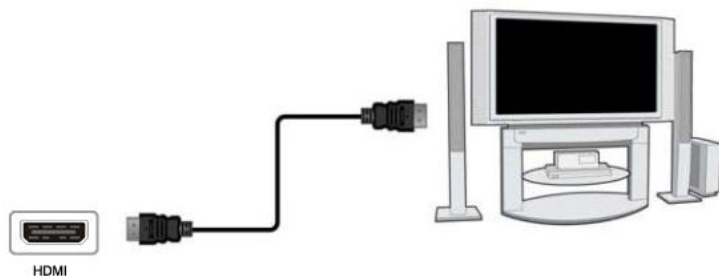
Second method: use the audio output from the S/PDIF Coaxial or Optical jack.



### 1.4.5.3 HDMI OUT

- (1) Follow the picture and plug one connector on your HDMI cable to the player's HDMI jack;
- (2) Follow the picture and plug the other connector on your HDMI cable to the TV's HDMI jack.

Note: The HDMI cable is an optional accessory sold separately.



In this way, you can have the highest quality video and audio via a single cable.

### 1.4.6 Connecting to an Digital Amplifier

- (1) Follow the picture and plug in the Toslink connector on your optical fiber to the player's S/PDIF Optical jack;
- (2) Follow the picture and plug in the other connector on your optical fiber to the digital audio device (digital amplifier or decoder).



Note: Optical fiber cable is not supplied.

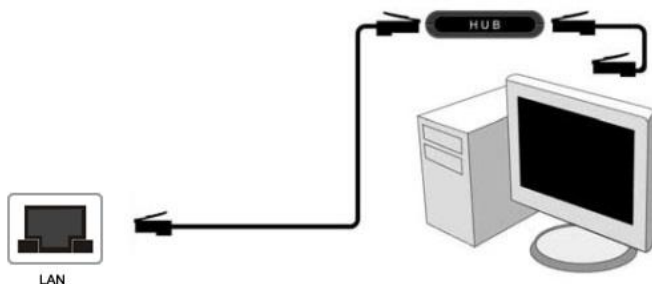
In this way, you can enjoy powerful Dolby Digital/ DTS or MPEG sound. (Please refer to '3.1 Changing Audio Settings' for configuration)

### 1.4.7 Connecting to a LAN

To connect to a LAN (Local Area Network) you require a cat5, cat5e or cat6 network cable (not supplied).

(1) Connect one of the crystal plugs on the cable to the player's RJ45 LAN socket;

(2) Connect the other crystal plug on the cable to a RJ45 LAN port on your router, switch, or hub devices.



### **1.4.8 Connecting to a WLAN**

(1) Make sure the player is powered on;

(2) Plug the Wireless LAN USB Adapter (i.e. Wi-Fi USB Dongle) to the USB HOST port of the player.

Note: The Wi-Fi Dongle is an optional accessory sold separately. (Please refer to '3.3 Changing Network Settings' for more details about wireless setup)

## **1.5 Power On / Off**

## Power On

After connecting the AC IN jack , the player will soon enter the home screen, and the Display will turn blue.

## Power Off

Press the power button on the front panel, the player will soon enter standby mode, and the power indicator will turn red. Then unplug the power cord to cut off the power supply.

# 1.6 Menu Language

The system language of this player can be set to English or other languages. Change the language you wish in the setup menu, the selected language will take effect immediately.



## 1.7 HDD Format

For users who wish to install a new SATA HDD into the player, please refer to the following procedures to format the hard disk on the player before usage.

Note: This page can be also accessed via Setup->System->HDD Format menu.

Step 1: Select OK on the Warning page, press ENTER to confirm.



Step 2: Select Format, press ENTER, and then hard disk format will start.

The formatting procedure will be finished within a few minutes. And then you can use the hard disk properly on the player.

Note: HDD format will remove all data stored on the hard disk drive. Please take care and backup your data in advance!

## **2. Remote Control**

All procedures in this manual can be carried out using the remote control buttons.

See the following description for details on each button and its function:

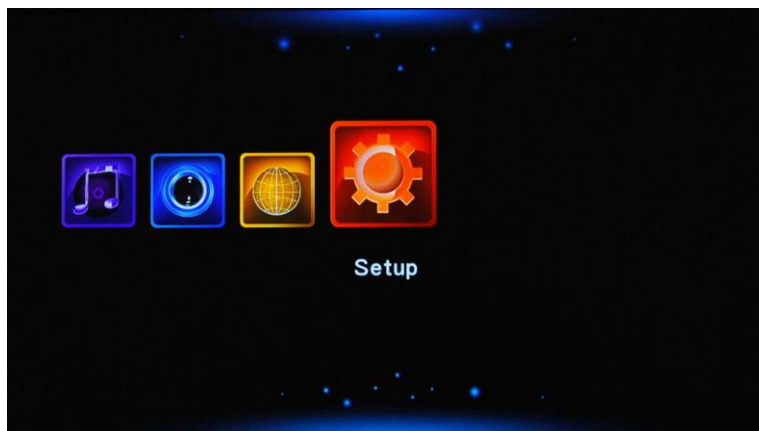


### 3. Setup Menu

The Setup menu allows you to personalize and configure the preferences for your player.

To select a Setup option:

Select the **Setup icon** on the home screen, or press the **SETUP** button on the remote control.



Use the **LEFT/RIGHT** navigational buttons to select an option, and then press **ENTER**.

There are five Setup options, including **Audio**, **Video**, **Network**, **System**, and **MISC**. Use the **UP/DOWN** navigational buttons to select a menu. Press **ENTER** to confirm. Press **RETURN** to cancel and display the previous menu screen.

### 3.1 Changing Audio Settings

Use this menu to configure audio settings.



#### Night Mode

Choose between **Off / On / Comfort**. If the option is turned on, the

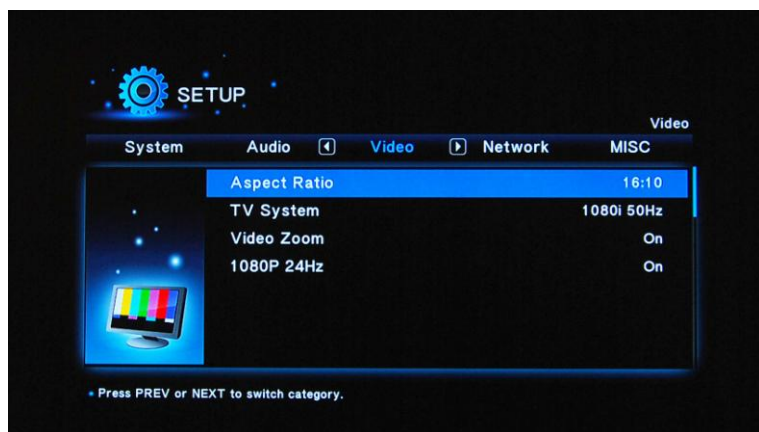
audio output volume will be decreased to make you more comfortable.

## Digital Output

Choose between **SPDIF RAW / SPDIF LPCM / HDMI RAW / HDMI LPCM / HDMI LPCM Multi-ch.** In raw mode, Dolby Digital or MPEG sound can be bypassed to the HDMI TV or Digital amplifier.

## 3.2 Changing Video Settings

Use this menu to configure video settings.



## Aspect Ratio

- Pan Scan 4:3: Display a wide picture on the entire screen and cuts off the redundant portions. Select when a standard 4:3 TV is connected.
- Letter Box 4:3: Display a wide picture with two black borders on the top and bottom of 4:3 screen. Select when a standard 4:3 TV is connected.
- 16:9: Compress the image to convert the whole image. Select when a 16:9 TV is connected.
- 16:10: Compress the image to convert the whole image. Select when a 16:9 TV is connected.

### **Video Zoom**

Turned on, the player will auto zoom out the video resolution to fix the TV screen.

### **Video System**

Select to adjust video output resolution: HDMI AUTO / 480P / 576P / 720P 60HZ / 1080I 50HZ / 1080I 60HZ / 1080P 50HZ / 1080P 60HZ.

1080P 24FPS

Choose this option to enable or disable 1080P 24HZ support. A TV set with 1080P 24HZ (24P) mode is needed.

## **3.3 Changing Network Settings**

Use this menu to configure Ethernet and WLAN (Wireless Local Area Network) settings.



### Wired LAN Setup

- DHCP IP (AUTO)  
Select to obtain IP address automatically.
- FIX IP (MANUAL)  
Select to manually input the IP Address, Subnet Mask, Default Gateway, and DNS Server IP Address.

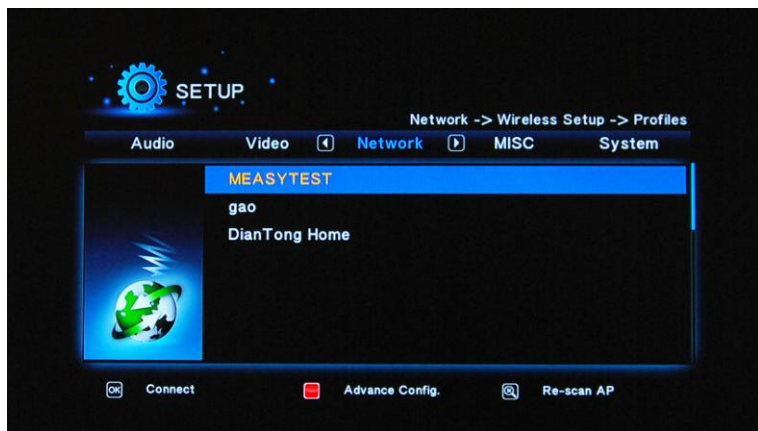
### Wireless Setup

Selecting a connection profile

This player can store up to three wireless network connections.

Press ENTER to go to next step, press RETURN to cancel, and press PLAY to connect.

### Get Connection Mode

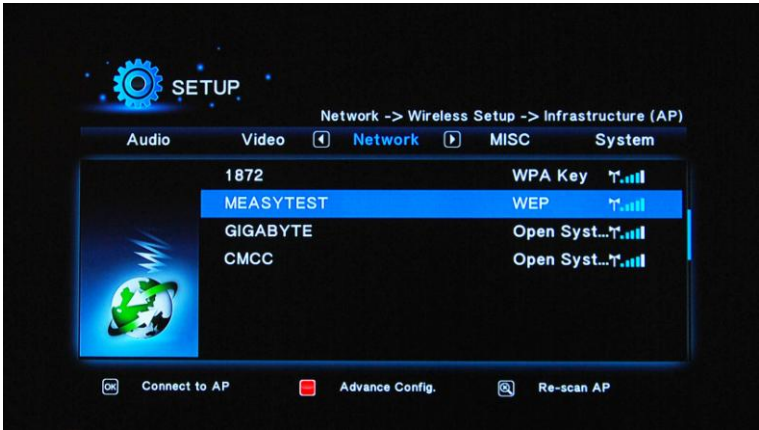


Choose between Infrastructure (AP) and Peer to Peer (Ad Hoc). Press ENTER to go to next step, and press RETURN to cancel.

### Infrastructure (AP)

Infrastructure mode is used to connect computers with wireless network adapters, also known as wireless clients, to an existing wired network with the help from wireless router or access point.

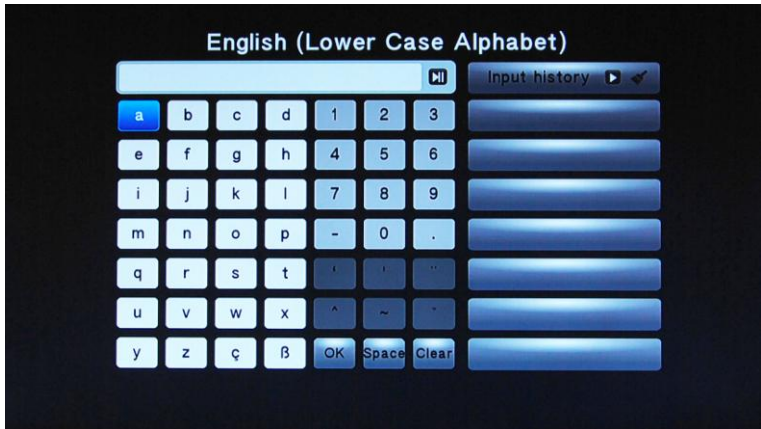
### Get SSID Name



Press ENTER to go to next step, press RETURN to cancel, and press ZOOM to refresh the SSID list.

Note: In the Security list, WEP (Wired Equivalent Privacy) and WPA (Wi-Fi Protected Access) means the network is encrypted, i.e. an encryption key is needed to access the network. NONE means it is an open system network.

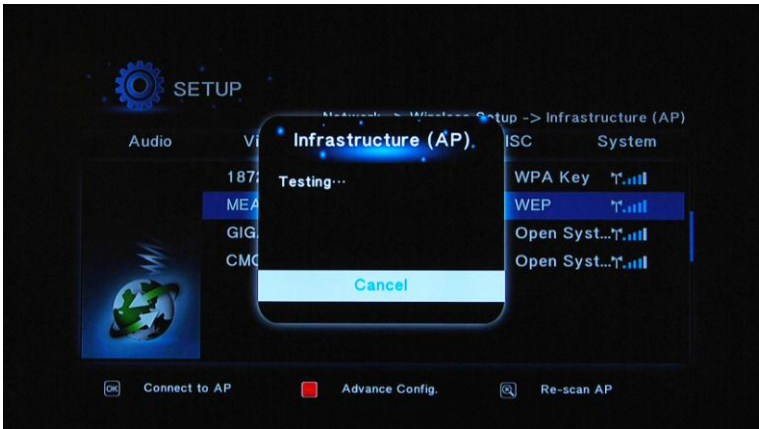
Input WEP / WPA Key



Encryption keys can be inputted via the virtual keyboard. Press the navigational buttons to select, ENTER to input, CAPS to switch between uppercase and lowercase, <- to delete a character, -> to insert a space, shift to make more symbols available, and OK to confirm.

### **Test connection**

The testing process will take for a while, please be patient to wait. If the test is ok, the network information (Profile Name, IP address, Subnet Mask, Gateway, etc.) will be displayed on the screen.

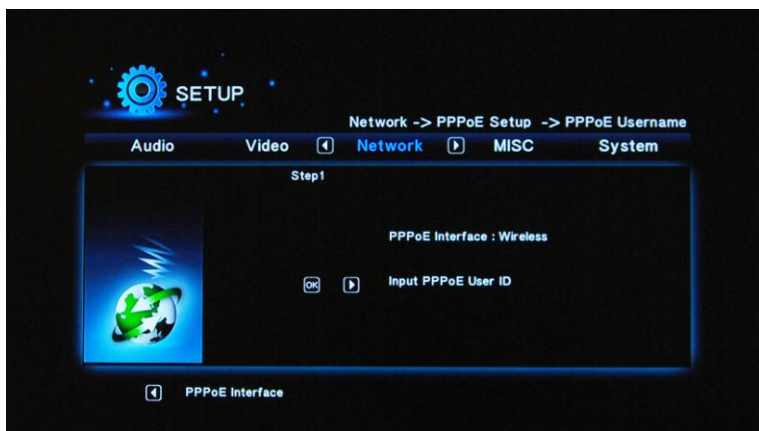


### **Peer to Peer (Ad Hoc)**

Peer to Peer mode, which is also called Ad Hoc mode or computer-to-computer mode, is used to connect wireless clients directly together, without the need for a wireless router or access point.

### **Ad-Hoc Setup**

Press ENTER to go to next step, press RETURN to cancel, and press PLAY to connect.



### 3.4 Changing System Settings

Use this menu to configure system settings.



### **Menu Language**

Select to choose the OSD (On-Screen Display) language. (English, Espanol, French, German, Italiano, Dutch, Russky, Polski,.....)

### **Text Encoding**

Select to set the text encoding option (subtitle display).

### **Time**

Select to set the system time.

### **R/RW Auto-Play**

dChoose OFF: there are two options (play disc or browse disc) for choice when in browser.

### **HDD Format**

Select to format the built-in HDD.

Note: Please take care that all data on the hard disk will be removed after formatting.

### **Screen Saver**

Select to turn on / off screen saver.

### **Resume Play**

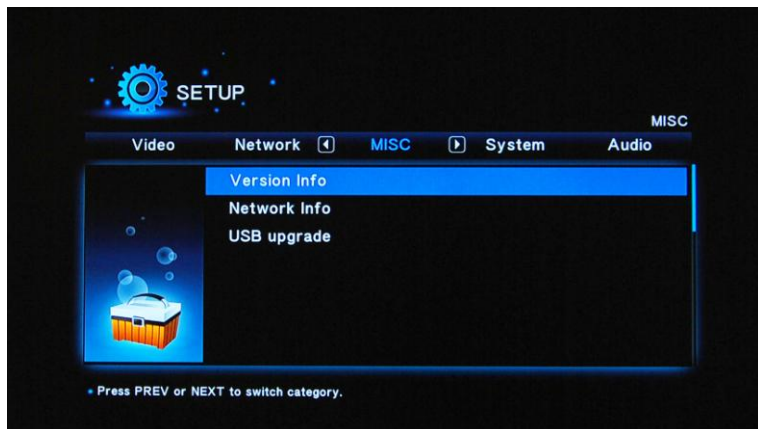
Select to turn on / off resume playback (auto-bookmarking) feature for movies.

Factory Default

Select to restore factory defaults.

### 3.5 MISC

Use this menu to adjust miscellaneous settings.



#### **Version Info**

Select to view firmware version information.

#### **Network info**

Select to view network information.

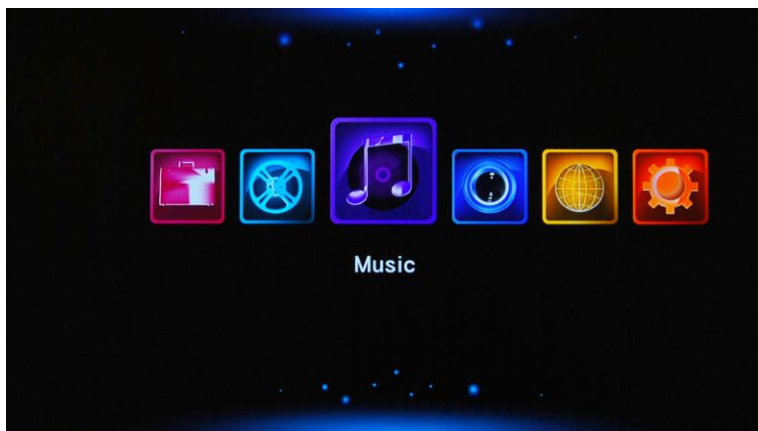
#### **USB upgrade**

#### **System Update**

- Select Extension Package Upgrade to update extension files for BT download, NAS, and Web server.
  - Select system upgrade to update the firmware via a USB stick.
- 1) Copy 'install.img' to the root directory of a USB stick, and connect it to the USB HOST port of the player.
  - 2) Press ENTER to confirm.

## 4. Browser Menu

The browser menu allows you to browse and play media files stored on USB devices, Local HDD, Network, DVD, UPnP-server. To enter the menu, select the Browser icon on the home screen, or press the ENTER button on the remote control.



The following buttons can be used while navigating the browser menu.

#### 4.1 Browsing All

In this mode, all folders and supported contents (music, photos, and movies) will be displayed.



Note: Please refer to chapter '9.1 Specifications' for more about the supported content formats.

Music tracks might not be able to played continuously under All filter, please switch to the Music filter instead.

#### 4.2 Browsing Music

In this mode, all folders and supported audio files in current directory will be displayed.

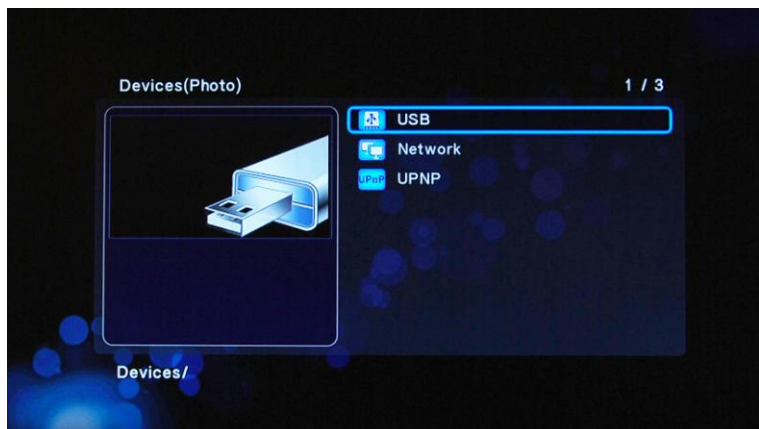


The following buttons can be used to control music playback.

Button	Function
<b>PLAY</b>	Begin playback.
<b>PAUSE / STEP</b>	Pause playback.
<b>FR / FF</b>	Fast rewind or fast forward. Press repeatedly to select the speed.
<b>REPEAT</b>	Set repeat options: <b>One</b> , <b>All</b> , and <b>Shuffle</b> .
<b>INFO</b>	Hide or display the information bar during playback.
<b>STOP</b>	Stop playback.

### 4.3 Browsing Photos

In this mode, all folders and supported image files in current directory will be displayed.



The following buttons can be used to control music playback.

Button	Function
<b>PLAY</b>	Begin playback.
<b>PREV / NEXT</b>	View the previous or next photo.
<b>LEFT / RIGHT</b>	Rotate a photo in any angle.
<b>ZOOM IN / OUT</b>	Zoom in / out the image.
<b>INFO</b>	Hide or display the information bar during playback.
<b>STOP</b>	Stop playback.

## 4.4 Browsing Movies

In this mode, all folders and supported video files in current directory will be displayed.



The following buttons can be used to control video playback.

<b>Button</b>	<b>Function</b>
<b>PLAY</b>	Begin playback.
<b>PAUSE / STEP</b>	Pause playback; Press again to step to next frame.
<b>SLOW</b>	Play video in slow motion. Press repeatedly to select the speed.
<b>FR / FF</b>	Fast rewind or fast forward. Press repeatedly to select the speed.
<b>PREV / NEXT</b>	View the previous or next movie.
<b>REPEAT</b>	Set repeat options: <b>Title</b> , <b>Chapter</b> , and <b>All</b> .
<b>ZOOM</b>	Zoom in / out the image.
<b>INFO</b>	Hide or display the information bar during playback.
<b>TIME SEEK</b>	Display playback search menu.
<b>A-B</b>	Set the beginning and end points of a section to repeat.
<b>ANGLE</b>	Change the view angle during DVD (with multi-angle) playback.
<b>MENU</b>	Return to the root menu during DVD playback.
<b>AUDIO</b>	Select an audio track
<b>SUBTITLE</b>	Set subtitle options.
<b>STOP</b>	Stop playback.

## 4.5 DVD playback

The DVD ROM drive supports DVD, Mini BD, AVCHD, VCD and Audio CD.

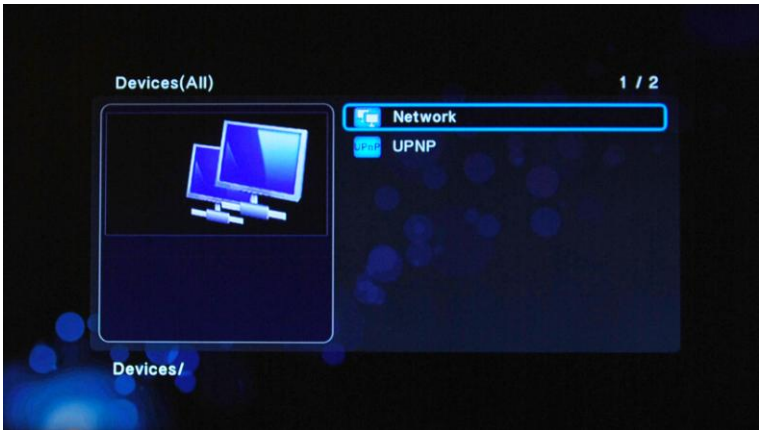
The following buttons can be used to control DVD playback.

<b>Button</b>	<b>Function</b>
PLAY / PAUSE	Pause and resume the playback.
FR / FF	Fast rewind or fast forward. Press repeatedly to select the speed.
PREV / NEXT	Press to move to the previous/next chapter.
TIME SEEK	Display playback search menu.
LEFT/RIGHT	Display the time information bar, then use the left/right button to the point you want to skip to, press enter button to playback.
<b>ZOOM</b>	Press to zoom the image.
<b>AUDIO</b>	Select an audio
<b>SUBTITLE</b>	Set subtitle options.
<b>MENU</b>	Press to go back to navigation menu.

## 4.6 A/V Streaming via Network

You can stream the media files shared on the home network (Ethernet or WLAN). Please refer to '3.3 Changing Network Settings' for details about network settings.

There are two ways to locate media files shared on your local network in the Network menu. One is to browse through Workgroup; the other way is to browse through ‘My\_Shortcuts’.



#### 4.6.1 Browsing through Workgroup

You can choose the workgroup which your PC belongs to from the workgroup list, find your PC name, and press the ENTER button to confirm. Then you can select and play the shared media files that you want to browse.

Note:

While browsing high definition video files (resolution up to 720p / 1080i / 1080p) via Ethernet or WLAN, the video might be buffering or stagnate. This is normal due to the limit of network speed or signal strength. In this case please playback the video via



USB, DVD ROM or Local HDD.

Due to different network conditions, sometimes the workgroup might not be accessed or shown in the list. And then you need to use 'My\_Shortcuts' to browse shared files.

#### **4.6.2 Browsing through 'My\_Shortcuts'**

You can also set 'Specific File Server IP' and access it from 'My\_Shortcuts' in the menu.

Select " My\_Shortcuts" and Press ENTER button, then press the RED button and a popup menu appears.

Select Add to open a popup menu where you can input Net User ID (Username), Net Password, Domain, Host Name, and Specific File Server IP of destination PC. Select OK to confirm, Cancel to



cancel, and Simple / Detail to switch between simple and advanced options.



Select the shortcut you added and press the ENTER button to confirm. Then you can select and play the shared media files on the destination computer.

## **4.7 A/V Streaming via UPnP-server**

A built-in UPnP (Universal Plug and Play) client has been integrated on the system, which enables the player to auto-detect UPnP Media Servers on the network to browse and stream media files from them.

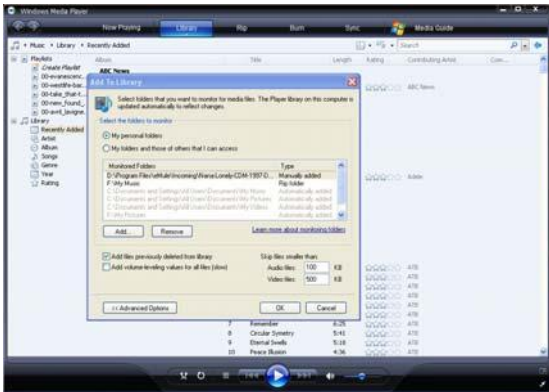
### **4.7.1 Installing UPnP Media Server on your PC**

There're a lot of free and commercial UPnP Media Server software, such as Windows Media Connect, Windows Media Player 11, XBMC Media Center (Linux/Mac/Windows), MediaTomb (Linux), etc. Please install one of them on you computer. In the following chapters, we will take Windows Media Player 11 on Microsoft Windows XP SP2 for an example.

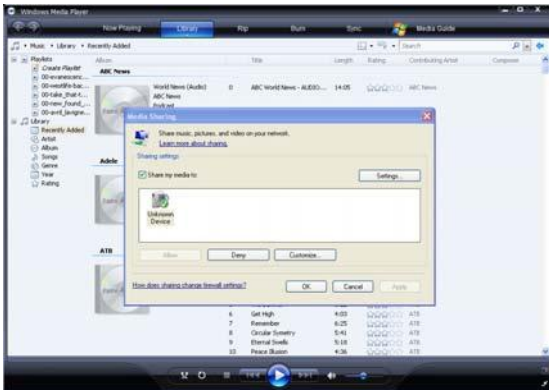
### **4.7.2 Sharing Media on your PC**

The Media Sharing feature of Windows Media Player 11 lets you enjoy the contents of your Windows Media Player library from anywhere in your home.

Open Windows Media Player 11, click Library -> Add Library -> Advanced Options to add or remove media files from the library.



Click Library -> Media Sharing, then you can allow or deny devices to access the media library. Click Allow to authorize your player.



### **4.7.3 Streaming Media on your Player**

- Connect your player to the home network (LAN or WLAN).
- Visit Browser - > UPnP menu on the player, select the UPnP-server, and press ENTER.
- you can browse the media library shared by Windows Media Player 11.

Note:

Make sure your player and your computer are on the same local area network and subnet.

Firewalls may prevent your player to communicating with your computer. Please open the ports manually and add your player to the 'trusted' list, or disable the firewall temporarily.

### **4.8 Renaming / Deleting Files**

When navigating in the browser menu, you can press the GREEN button to activate a popup menu where you can rename and delete files or folders.

Press the UP / DOWN buttons to select from Return, Rename, and Delete. And press ENTER to confirm.

### **4.9 Managing the Playlist**

This player supports the playlist function, which allows you to add your favorite contents on local HDD to the playlists (All, Music,

Photos, and Movies), and enjoy them at any time.

#### **4.9.1 Adding files to the playlist**

Select the favorite file you wish to add, press the BOOKMARK button, and the file will be marked. Press the OK button to confirm, and then an on-screen message ‘Add selects to list’ will be shown. Multiple selections are allowed. See photo below.

#### **4.9.2 Browsing the playlist**

Press the UP / DOWN buttons to select Play List in the browser menu. Press the LEFT / RIGHT buttons to select between All, Music, Photos, and Movies. And press the ENTER button to confirm. Then you will enter the playlist.

If you wish to delete a file from the playlist, press the SELECT button to select, and then press the CONFIRM button to confirm.

## **5. File Copy Menu**

When navigating in the browser menu, you can press the GREEN button to activate a popup menu where you can copy files or folder between USB devices, Local HDD, Data DVD (read only), and Network.

Please refer to the following operations to copy / move folders / files between devices.

Step 1: Select the source device and destination device.

Step 2: Select the source files you want to copy.

Step 3: Select the destination folder to store the above files.

Step 4: Select Copy or Move to proceed.



## 6. BT Downloads and SAMBA

1. Go to the SETUP->Network ->**BT Process** and **SAMBA Process** and turn it ON and quit by Confirm.

2. Also please double check the LAN network connections or through the USB WiFi

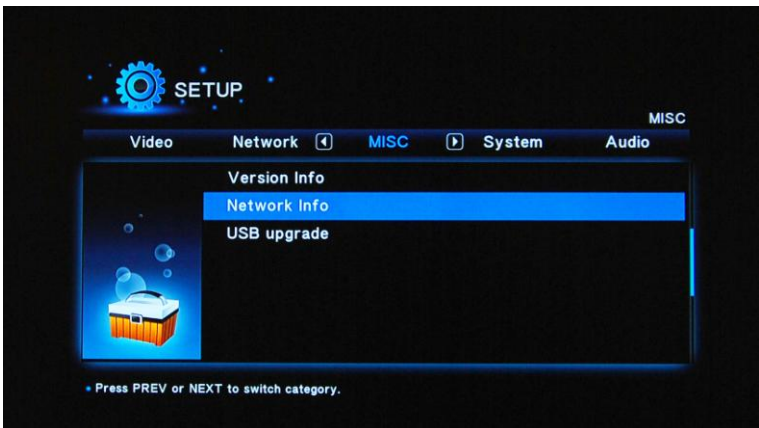
3. Go to the SETUP—Network, and the LAN network will locate an IP address for the media player.

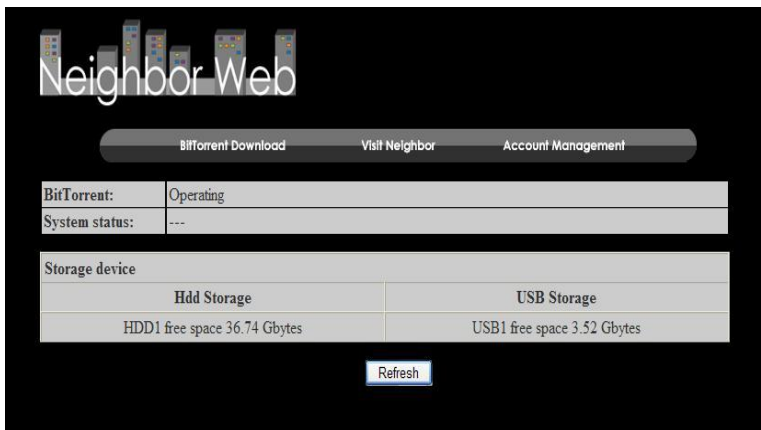
For instance, in the picture, we can see the IP address is: 192.168.1.102

4. So users can use any computer in the LAN network, and input

the IP address to the Browser.

Or, go to “START”—Process—and input [HTTP://192.168.1.102](http://192.168.1.102), press “Enter”, there is BT/SAMBA interface.





A、Bittorrent Download

B、**Visit Neighbor: Samba function, just like NAS (Network Attached Storage)**

## **User name and password**

User name: admin

Password: 123

## **7. IMS**

### **Internet Multimedia Service**

This feature is additional function. All contents and services under

this feature are provided by third-party service providers, our company does not offer any contents and services of this feature and is not responsible for any contents and services provided under this feature. Our company is not responsible for any operational stability of the contents and services, for example, if you cannot access certain web site for video streaming or news broadcast, or the content of a web site has been changed etc, are all responsible and control by the third-party service providers. If you find that these features cannot operate properly, please contact our customer service or visit our company website to obtain the relevant information.

## **8. Upgrading the Firmware**

The firmware is the operating system (OS) installed on the device. Firmware upgrades can bring new features, improvements and bug fixes.

Please refer to System Update in chapter ‘3.4 Changing System Settings’ for more details.

### **Force upgrade with RESET key**

When you can not upgrade firmware through normal update, you have to force upgrade.

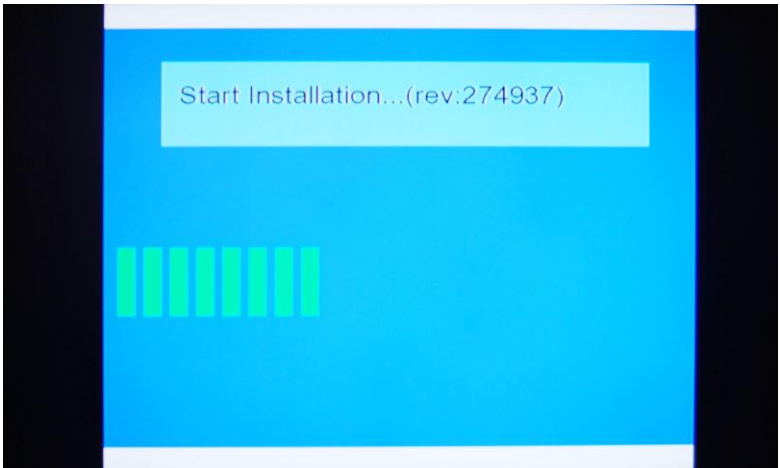
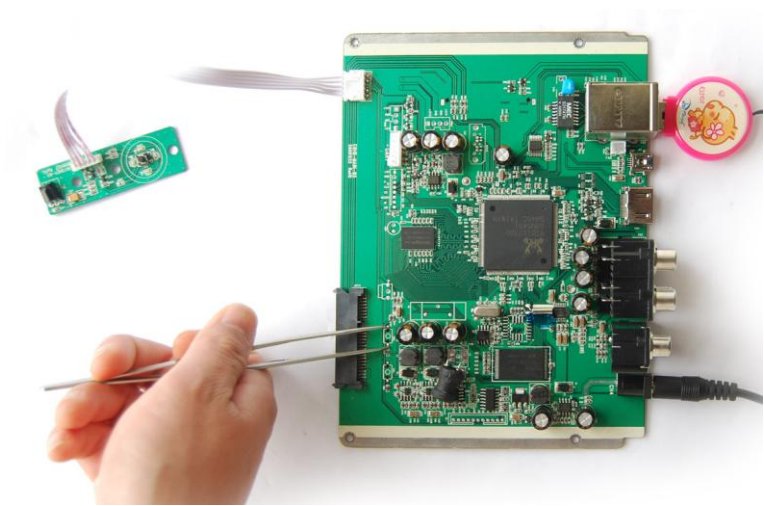
1. Please download the new FW again,
2. Make sure the FW is completed release from the package file.

3. After successfully releasing, please copy install.img to the root directory of your USB stick.
4. Press and hold the RESET button on the rear panel, and connect the player with power supply;
5. Wait for more than 3 seconds, and then loose your finger on the RESET button. Then the upgrade process will start automatically, an install page will appear on the TV screen.

### **Force upgrade without RESET key**

If there is not a RESET key on the rear panel, please refer to below steps

1. Please download the new FW again,
  2. Make sure the FW is completed release from the package file.
  3. After successfully releasing, please copy install.img to the root directory of your USB stick.
  4. Please tear apart the media player very carefully, and take out the PCB.
  5. Plug the USB Stick with the correct firmware into USB HOST
  6. Connect the media player with your TV correctly.
  7. Use a metal devices, such as twizzer, to connect the two point on the PCB called SW3. And Turn ON the media player, until there is a Upgrading screen appearing on the TV.
  8. Then, please take off the metal device, such as trwizzer, and the media player is keeping on upgrading.
- Please wait and DO NOT take any operation, until the media player finished the upgrade and reboot itself automatically



## 9. Appendixes

### 9.1 Specifications

Note: The specifications and design of this product are subject to change without notice.

#### **I/O INTERFACES SUPPORTED:**

3.5" SATA HDD

USB 2.0 HOST port x 2 (compatible to USB 1.1)

USB 2.0 DEVICE port (connecting to PC)

Composite (CVBS) A/V jack

Component Y/Pb/Pr jack

HDMI V1.3 interface

DVD Drive

S/PDIF coaxial & optical jack

AC-IN 100V- 220V ~

#### **FILE SYSTEM SUPPORTED:**

FAT/FAT32/NTFS/EXT3

#### **CONTENT FORMATS SUPPORTED:**

AVI/MKV/XVID/DIVX/TS/M2TS/MPG/MP4/M4V/MO  
V/VOB/ISO/IFO/DAT/

WMV/ASF/RM/RMVB/FLV/DVD MENU Playback/H.264

MP3/OGG/WMA/WAV/AAC/FLAC/DOLBY

DIGITAL/DTS/DTS Downmix

HD JPEG/JPG/BMP/GIF/TIF/PNG

**VIDEO CODECS SURPORTED:**

MPEG-1

HD MPEG-2

HD MPEG-4 SP/ASP/AVC (H.264)

WMV9 (VC-1)

RealNetworks (RM/RMVB) 8/9/10, up to 720p

**AUDIO CODECS SURPORTED:**

MP2/3, OGG Vorbis, WMA (DRM, and Advanced Profile not supported), PCM, LPCM, MS-ADPCM, LC-AAC, HE-AAC, COOK, RA-Lossless

**SUBTITLE FORMATS SURPORTED:**

SRT, SMI, SSA, ASS, IDX/SUB, SUB

**NETWORK FEATURE**

10/100Mbps Auto-Negotiation Ethernet

802.11b/g/n WLAN, up to 300Mbps (supported by optional WLAN USB Adapter)

## 9.2 Frequently Asked Questions

### Question 1.

When I try to disconnect the USB device, I keep on getting “The device ‘Generic volume’ cannot be stopped right now. Try stopping the device again later.” message, what should I do?

#### *Answer:*

Close any program that might be accessing data on the player, including Windows® Explorer. If it does not work, close all programs and wait for another 20 seconds, then try the green arrow icon again. If it still does not work, you should shut down the player and disconnect the USB cable.

### Question 2.

I find new file names and folder names that I never created before or they have strange gibberish names.

#### *Answer:*

Most likely, the player’s file allocation table (FAT) has been corrupted. This might be due to the player shutting down (due to low battery power) while reading or writing to your computer by the USB connection. Windows and Macintosh often write extra files to the hard disk such as finder.def or System volume info. These are normal and will not do any harm to the player.

### Question 3.

I used my player to transfer files back and forth between different

computers. Will defragmenting the player hard disk do any harm to it?

**Answer:**

Defragmenting the player hard disk may be useful after having transferred many files to and from the player. It is never harmful to use the defragment on the player. Make sure no other programs are running while using the Windows®defragment utility. Make sure you have connected the player with the external power adapter during this procedure.

**Question 4.**

My files have disappeared from the player.

**Answer:**

Make sure that you browse your files via the correct browser mode which means correct filtered views such as Photos, Music, or Movies.

**Question 5.**

During power on, why does the TV will have a short flashing, blue screen or screensaver?

**Answer:**

This is normal, when the system initializes, it will setup the corresponding parameters so it can output the correct video signal to the TV, during the initializing time, the TV will receive incorrect signals or the signals will not be stable and will cause the TV screen to flash, some TV's will treat this as no signal, and will

display a blue screen or screensaver.

**Question 6.**

Why when I switch to Y/Pb/Pr 480p, 576p, 720p, 1080i, and 1080p, does the TV screen display an unwatchable picture?

**Answer:**

Please check if your TV supports Y/Pb/Pr 480p, 576p, 720p, 1080i, and 1080p output, if your TV does not support, please use the A/V signal display instead, press the TV SYSEEM button on the remote control, then switch the TV's video input to NTSC or PAL.

**Question 7.**

Why is there no sound on movie or music playback when using Y/Pb/Pr component output?

**Answer:**

Y/Pb/Pr output is a video output only, and does not include sound signals. When using Y/Pb/Pr output, please plug the A/V OUT or the S/PDIF jack to output sound.

**Question 8.**

I cannot get SSID name, the screen always displays: 'Can't get any SSID!!'

**Answer:**

When the WLAN USB Adapter is connected to the player, it needs some time to get initialized. Please wait for about 1~2 minutes and try refreshing the SSID list again.

### Question 9.

I cannot see files shared on my computer via Browser->Network menu.

#### **Answer:**

Please check following items:

- 1) Connect the player to network and obtain an IP address first;
- 2) Please enable NetBIOS of TCP/IP on computer;
- 3) Please check your PC's firewall settings;
- 4) Please enable your PC's 'Guest' account;
- 5) Please share the folders which you wish to browse on your PC, and make sure that 'Everyone' or 'Guest' has the right to access.

### Question 10.

I configured everything correctly, but still cannot get the wireless network or UPnP function to work.

#### **Answer:**

Are you using a firewall such as Norton Internet Security, McAfee Personal Firewall, Zone Alarm, etc. or even the built-in firewall of Windows XP? (Don't forget that Service Pack 2 for Windows XP automatically upgrades your firewall and turn it on by default)

If you have a firewall, it may need to be configured or have exceptions created to allow you to see and communicate with the player on the network. To test if your firewall is preventing network communication (including PING and access shared folders), try disabling it to see if you can connect. If you can

connect with the firewall disabled, you may need to add the player to the 'Trusted' list or configure the firewall for local intranet access. Worst-case, disable your firewall long enough to use the player, then enable it again when done.

### **Question 11.**

I am using the 802.11n Wi-Fi dongle with an 802.11n wireless router, why the speed is still 802.11g 54Mbps rather than 300Mbps?

#### ***Answer:***

The IEEE 802.11n Draft standard prohibits using high throughput with WEP or TKIP as the unicast cipher. If you use these encryption methods (e.g. WEP, WPA-TKIP), your data rate will drop to 54 Mbps. You may contact the Access Point or router manufacturer to download the latest firmware, or try other encryption methods (WPA2-AES or WPA2-TKIP), or choose to configure an unsecured profile, but this option is not recommended.

### **9.3 Warranty**

What your warranty does not cover:

- Acts of nature, such as fire, static discharge.
- Damage from unauthorized repair, alteration or accident.
- Damage from misuse or neglect.
- A unit that has been modified or incorporated into other products

or is used for institutional or other commercial purposes.

-Loss of customer's software, firmware, information, or memory data.

-Improper handling or installation.